

Reset

Stephan Hürlemann, 2026







Reset

Stephan Hürlemann, 2026



Thanks to the modular Reset system, stepped floor structures can be assembled, remodelled, dismantled, removed and reconstructed as easily as using building blocks. In-between zones, waiting areas and previously underutilised spaces can be used efficiently without the need for major planning or structural measures – such as for communication-friendly meeting landscapes, sofas for informal dialogue, islands for quiet work, arenas or forum-like platforms as well as display installations and much more.

All Reset configurations consist of square platforms with a side length of 75 cm and a height of 28 cm. The platforms are constructed from only three components – a panel and two base elements – and can be easily and intuitively used with just a few connecting elements and continually rearranged in new configurations. And when not required, they can be stowed away to save space.

Folding seat cushions made of recyclable V-foam provide enhanced comfort and an inviting home-like touch. They can also be used to influence the character of a Reset structure: fewer seat cushions indicate a setting for shorter meetings and discussions, while the presence of more seat cushions suggest a place for retreat. Cushions from the Vitra Cushions collection can be added for even more comfort.

Reset is made entirely from recyclable materials. The panels, which can serve as base panels or seat panels, are available in OSB, birch or MDF Valchromat in the colours basic dark and grey. The exceptionally lightweight yet robust base elements are manufactured from EPP (expanded polypropylene) with 30% recycled content and are offered in the colours basic dark or soft grey. And the connecting elements made of 100% recycled polyamide also come in either basic dark or soft grey. This versatile selection of materials and finishes makes it easy to find a suitable Reset configuration for every environment.



Stephan Hürlemann

Stephan Hürlemann is a Swiss architect and designer with an independent studio in Zurich. He designs and develops interiors, furniture, products and installations for international clients. He has worked together with Vitra since 2017.

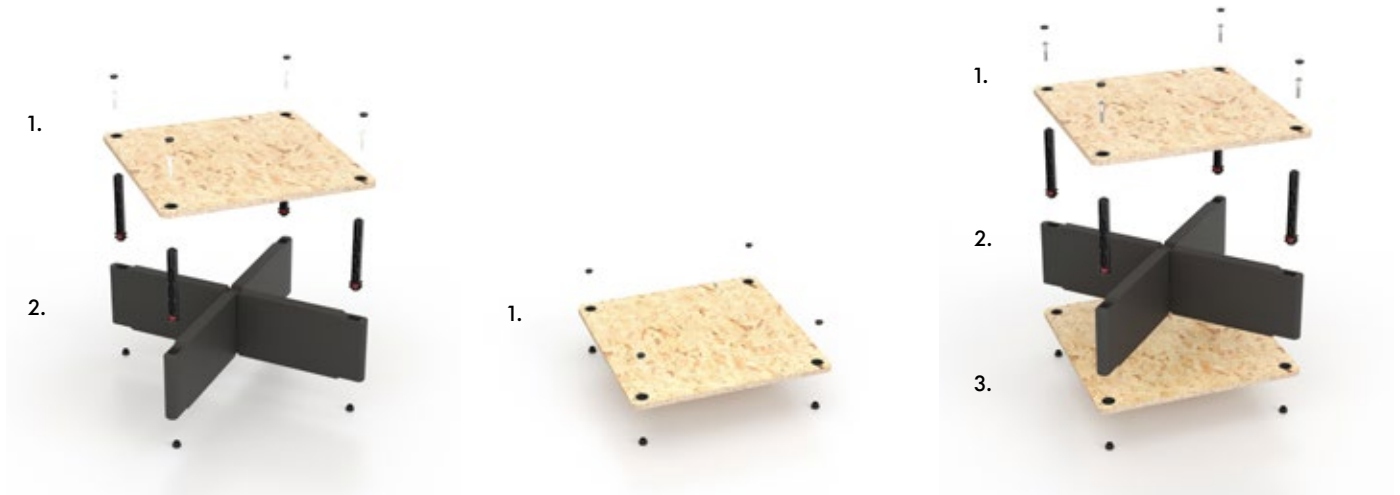
1-5	Reset	21	Vitra Cushions
6-9	The module	24-27	Simple, tool-free reconfiguration
10-13	Platforms	28-31	Safety guidelines
14-15	Use of base panel	32	Sustainable quality
16-19	Cushion and folding seat cushion	34-36	Colours and materials
20	Backrest	37	Dimensions





The module

Reset consists of two parts: panel and base structure. The two identical base elements are fitted together crosswise, and the panel is placed on top and secured with screws. An optional base panel can also be used.



1 + 2 makes a platform

1 + glides makes a base panel

1 + 2 + 3 makes a platform with base panel



Individual parts

1. Panel

2. Base structure

3. Connection set:

- A Receptor sleeve, top
- B Receptor sleeve, bottom
- C Interlocking shaft
- D Connecting pin
- E Receptor sleeve end cap
- F Glide
- G Collar screw

4. Platform connector

5. Base panel connector
(simultaneously a tool for modifying platforms)



Stacking platforms



Construction of towers, with optional base panel, max. 5 modules



The top platform is finished with end caps



Modules can be stacked and locked in place with connecting pins



The platform connectors are used to link the assembled platforms



Base panel connectors secure the glides of the base panels and prevent them from sliding





Use of base panel

The base panel allows cables to be invisibly routed to the required location.



As with carpeting, base panels can be used to define and delimit areas and paths and to design and highlight islands within a space.



Arena configuration – with base panel



Arena configuration – without base panel

Seat cushion and folding seat cushion



folding seat cushions

seat cushion

Reset's folding seat cushion measures 75 x 75 cm and covers a single platform.

When folded together, it covers half the platform, providing double padding thickness for additional seating height and leaving a walkway or footspace for those seated on the level above. When folded at an angle, it can also be used as a back cushion.

The folding seat cushions are available in the cover materials Plano, Laser RE and Volo.









Backrest



The wedge-shaped back cushion can be used together with the folding seat cushion to create sofa-like areas.

The back cushion (L 75 x H 32 cm) is available in the cover materials Plano, Laser RE and Volo.





Reset configurations can be supplemented with Vitra Cushions, creating comfortable lounge-like zones, especially when used in combination with the folding seat cushions. Thanks to an extensive selection of upholstery fabrics, Vitra Cushions provide numerous options for customised layouts.



Cushions shown

1. Vitra Cushion 65 x 55 cm

3. Vitra Cushion 50 x 50 cm

5. Vitra Cushion 65 x 30 cm

2. Vitra Cushion 60 x 40 cm

4. Vitra Cushion 40 x 40 cm

6. Vitra Cushion 40 x 30 cm



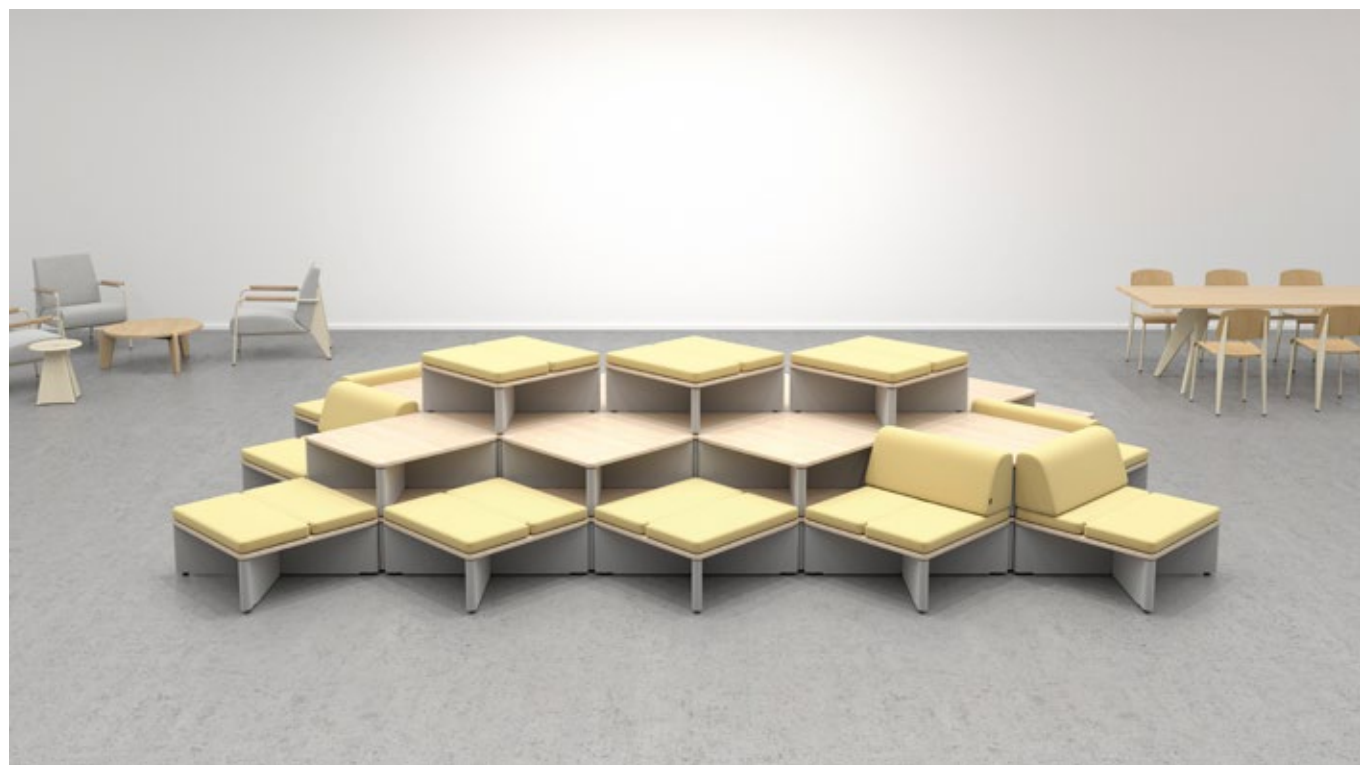


Simple, tool-free reconfiguration



Space needed for assembled platforms

Sample configurations with a set of 40 platforms – quick and easy assembly and reconfiguration by just one person



Pyramid-shaped configuration for in-between zones



Forum configuration for 18 people



Arena for lectures, training sessions and townhall meetings for 28 people





Safety guidelines

1. For safety reasons, the maximum height is 5 levels.
2. It is possible to sit or walk on any module, provided there is no vertical gap greater than 3 levels in any direction (360°), or if such sides are protected by a wall.

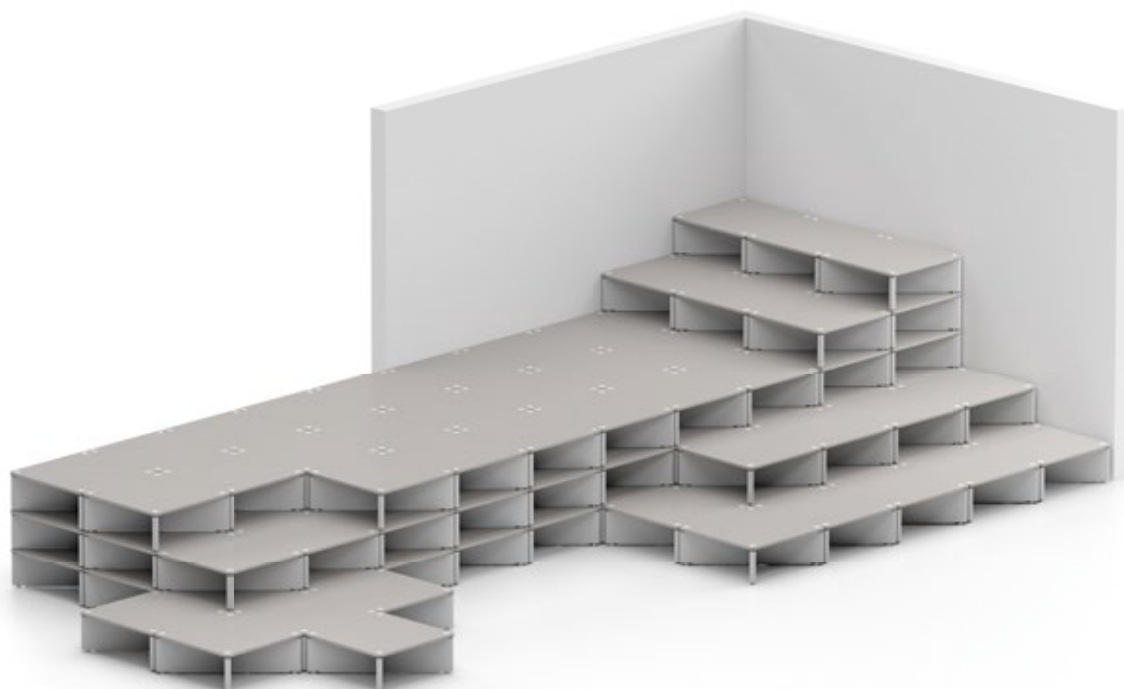
Towers

Towers can be built with up to 5 elements. It is possible to sit on towers that are 1, 2 or 3 levels high.

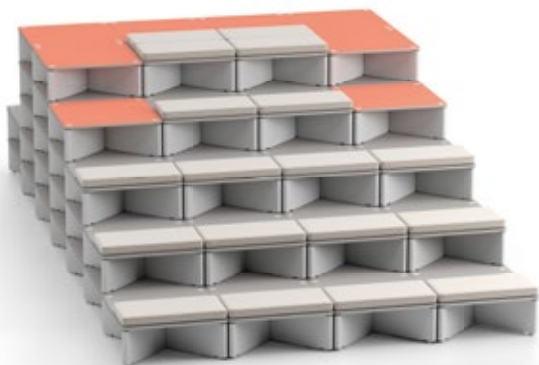


Configurations

Larger structures may be built following the same rules as the towers. As an added precaution, they can be positioned against walls to prevent accidental falls.

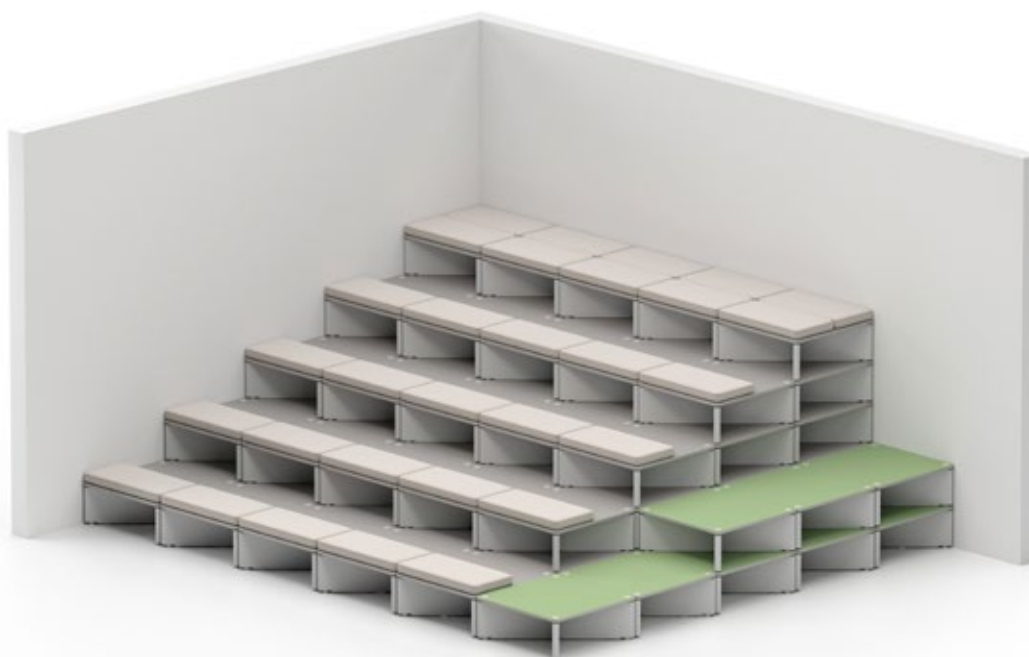


In the left-hand model, the platforms marked in red present a safety hazard and risk of falling. The model on the right shows how repositioning these platforms to the side creates a safe configuration with a maximum height of 3 levels.



Forum configurations

Important: any sides that are 4 or 5 levels in height need to be protected from falls in all directions (blue panels).







Sustainable quality



Vitra Test Centre

All Vitra office chairs are subjected to rigorous testing, based on the parameters of 15 years of use, at the company's own Test Centre. Vitra carries out tests that go far beyond standard requirements, with an

inspection catalogue comprised of the world's toughest tests (simulation of worst-case usage).

Over the years, Vitra has developed additional tests of its own that are not found in any official catalogue of standards.



Greenguard

The GREENGUARD label for indoor air quality (2001) recognises products that contribute to the creation of healthier indoor environments.



GS

With the GS seal for tested safety, a state-authorised inspection institute certifies the suitability and safety of the construction and monitors production at regular intervals.

BIFMA

Bifma

Reset fulfils the ANSI/BIFMA standard X5.1-2011, thus meeting the stringent safety requirements for the US market.

Colours and materials



37
OSB, natural,
lacquer finish



81
birch, natural,
lacquer finish



05
grey dyed
through



53
soft grey



30
basic dark dyed
through

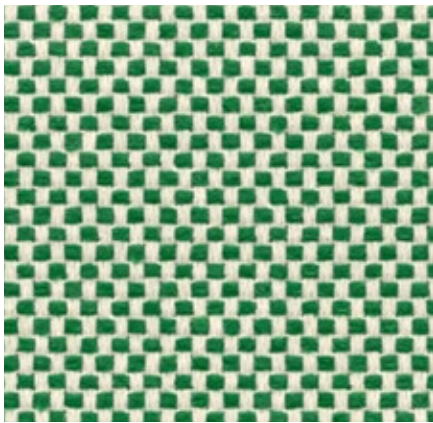


30
basic dark

Panel

Base structure

Laser RE Heavy use, F40



The environmentally friendly fabric Laser RE is made from recycled polyester. It has a distinctive woven appearance, which is particularly accentuated by contrasting duotones in a varied palette of 25 colours. Practical and easy to care for, as well as durable and highly abrasion-resistant, Laser RE is also well suited for office environments.

Laser RE is available in 25 colours.

Material	100% recycled polyester
Weight	520 g/m ² (15.3 oz/y ²)
Width	144 cm +/- 2 cm (57")
Abrasion resistance	100,000 Martindale
Fastness to light	Type 6
Pilling	Grade 4-5
Fastness to rubbing	Grade 4-5 dry and wet



Plano Heavy use, F30



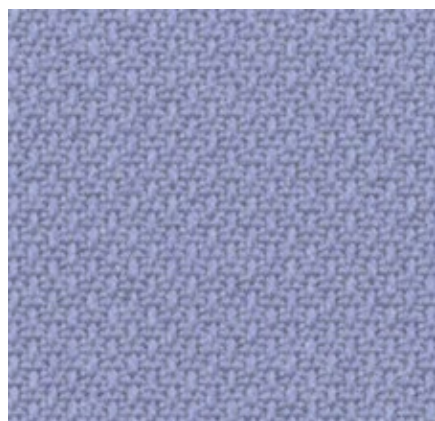
Plano is a robust plain weave with a flat, even texture. The wide palette of duotones with new, delicate washed-out shades includes many relatively neutral hues, a good number of which are coordinated with the Hopsak colour range. Thanks to its durability and longevity, Plano is also an ideal choice for office furnishings.

Plano is available in 39 colours.

Material	100% polyester
Weight	265 g/m ² (7.8 oz/y ²)
Width	142 cm +/- 2 cm (56")
Abrasion resistance	80,000 Martindale
Fastness to light	Type 6
Pilling	Grade 4-5
Fastness to rubbing	Grade 4-5 dry and wet

 39 yellow/pastel green	 12 light grey/ice blue	 05 cream white/sierra grey	 03 parchment/cream white	 15 pink/sierra grey
 68 avocado	 81 blue/coconut	 18 light grey/sierra grey	 20 tobacco/cream white	 16 dark red/ice blue
 61 classic green/cognac	 43 petral/nero	 19 sierra grey	 99 cognac/parchment	 98 dark red/nero
 34 grass green/forest	 86 dark blue/brown	 87 nero/cream white	 67 cognac	 97 red/coconut
 41 classic green/forest	 13 nero/ice blue	 74 sierra grey/nero	 11 marron/cognac	 96 red/cognac
 52 mint/forest		 69 dark grey	 80 coffee	 72 poppy red
 17 forest/sierra grey		 62 dark grey/nero	 75 marron/nero	 07 orange
 40 coconut/forest		 66 nero	 54 brown	 63 red/poppy red
			 73 nero/coconut	 84 poppy red/champagne

Volo Heavy use, F6o



Volo is a finely structured wool blend with a refined weave that gives it an elegant appearance. This expressive textile shows strong solid colours to full advantage while simultaneously offering pleasant tactile qualities. With its soft look and appealing texture, Volo is a perfect fit for home interiors, but it is also well suited for use in the contract sector.

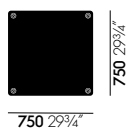
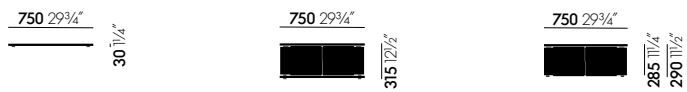
Volo is available in 16 colours.

Material	15% polyamide, 85% new wool
Weight	435 g/m ² (12.8 oz/y ²)
Width	145 cm +/- 3 cm (57")
Abrasion resistance	100,000 Martindale
Fastness to light	Type 6
Pilling	Grade 4-5
Fastness to rubbing	Grade 4-5 dry and wet

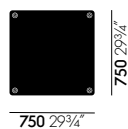


Dimensions

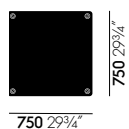
(in accordance with EN 1335-1:2000)



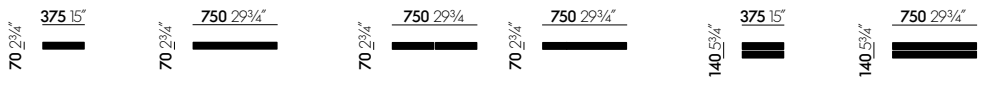
Base plate with glides



Platform with base plate and glides



Platform with glides



Reset, seat cushion



Reset, folding seat cushion - unfolded



Reset, folding seat cushion - folded